

INSTRUCTIONS FOR THE USE OF UTRADE-FX TRADING PLATFORM

1-CHART INSTRUCTIONS 2-TRADING ORDERS INSTRUCTIONS 3-HEDGE INSTRUCTIONS 4-REDESIGN OF THE MARKET WATCH SCREEN

1-CHART INSTRUCTIONS

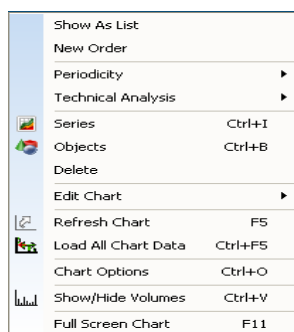
Utrade-fx [vertex charting](#) system is considered one of the best charting systems in the world, for it has numerous studies and is very easy to use especially from the keyboard and mouse control

To **zoom in** the charts just press **(+)** On the keyboard

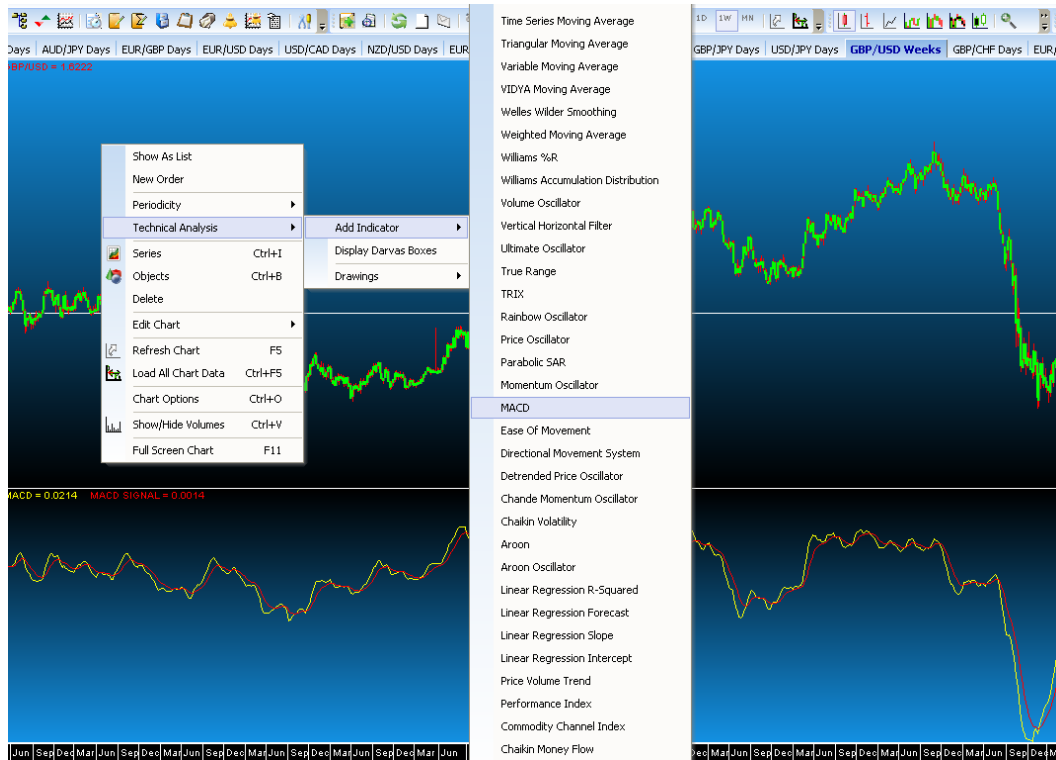
To **zoom out** the charts just press **(-)** On the keyboard

To **look at different periods** on the charts just use the **scroll on the mouse**, either scrolling forward or backwards

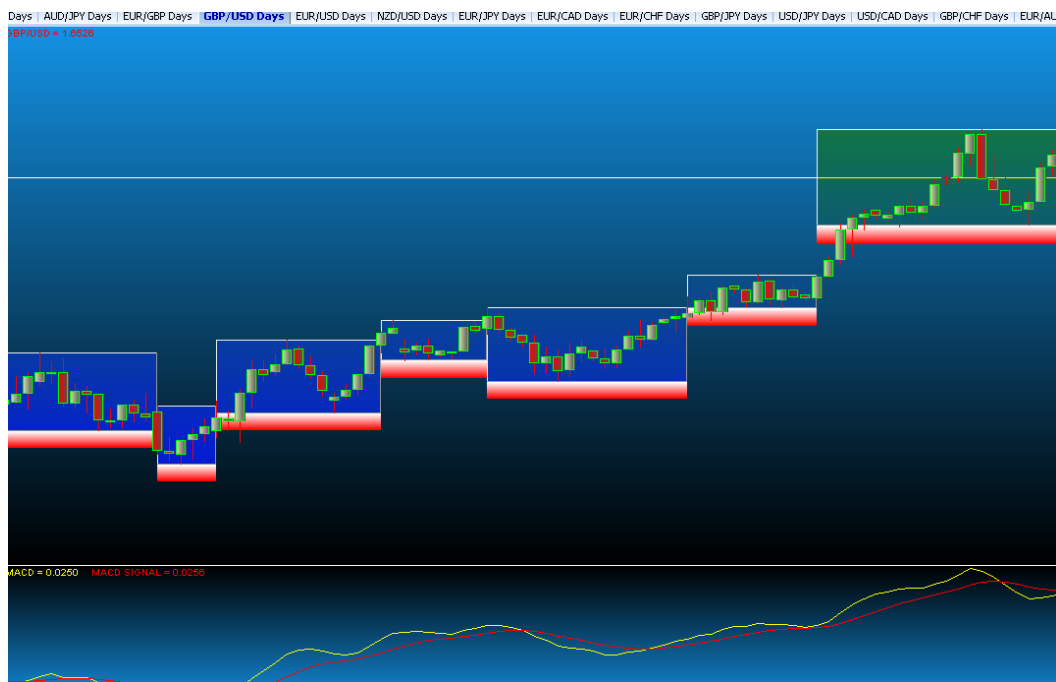
JUST PLACE THE MOUSE ON THE CHARTS AND CLICK IT ONCE AND YOU WILL GET THE CHART CONTROLL SCREEN SHOWN BELOW



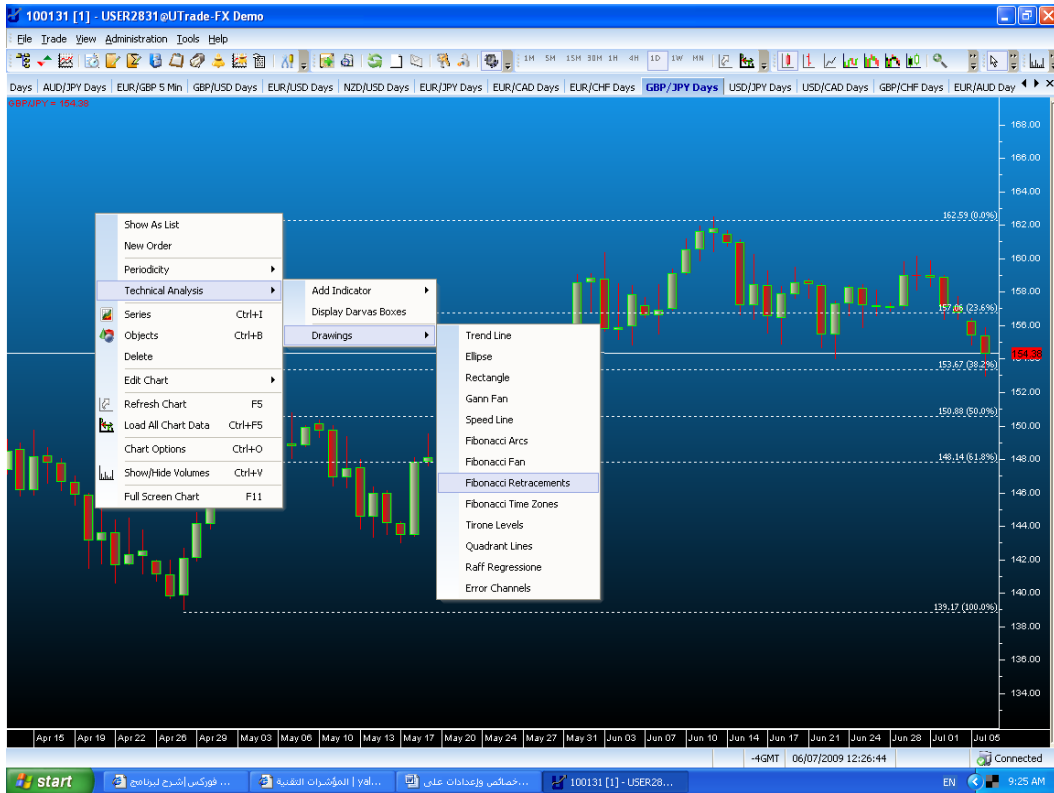
The charting vertex system has over **60** famous technical analysis studies, in order to add a study just press **Technical Analysis** then **Add Indicator** then choose the study you like let it be for example the **(MACD)** as shown in the diagram below, in order to **cancel the study** just press on the **(SERIES)** in the chart control screen or press **Ctrl+I**



The vertex charting system has (DARVAS BOXES) Application: to add this application just go to the chart control screen and press **Technical Analysis** then press **Display Drava's Boxes**

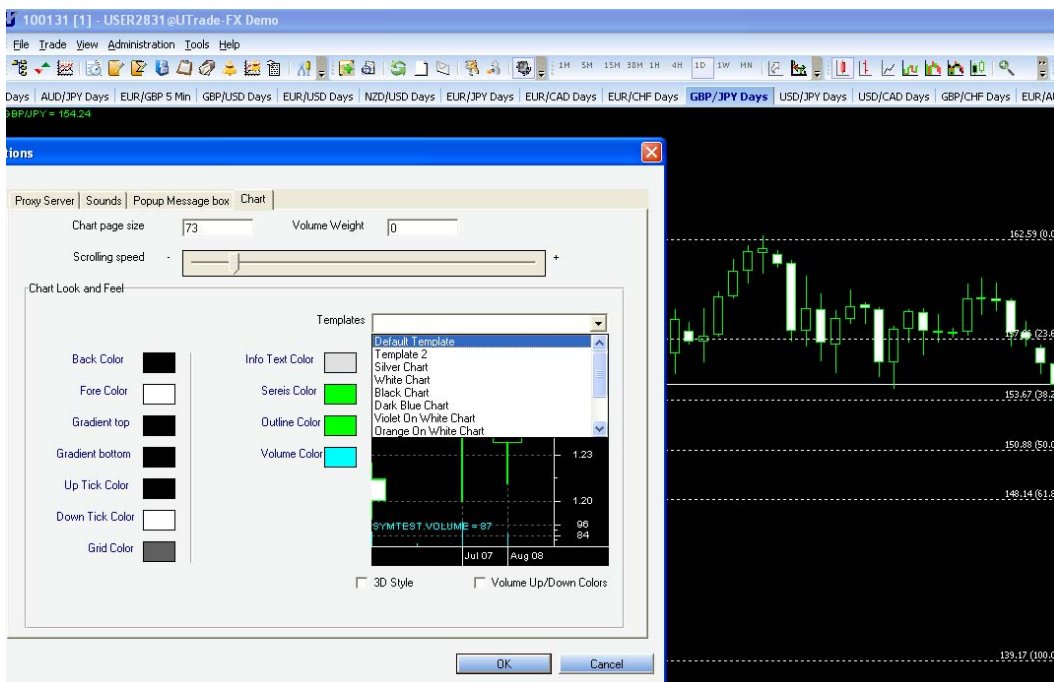


The vertex charting system has many line studies such as the (Fibonacci, Gann Fan, Tyrone levels... Ext) in order to add them just go to the chart control screen and press **Technical Analysis** then **Drawings** and then choose the line study you want let say **Fibonacci** as shown in the diagram below. In order to **cancel a line study** just go to (OBJECTS) or press **Ctrl+B**



In order to see the **historical data**, once you choose the currency just press **(Ctrl+F5)** and you will get data for many years, In order to **refresh** the charts you just need to press **F5**

The vertex's charting system has many saved **templates** for the charts just go to **(CHART OPTIONS)** then **(TEMPLATES)** and choose the template you like and press ok , as shown in the illustration below ,



2-TRADING ORDERS INSTRUCTIONS

(MARKET ORDERS)

The market order is where you make a buy or sell transaction on a currency , just go to the (MARKET WATCH) screen and left click the mouse on the currency you want to trade then either choose **sell market** or **buy market**

The screenshot shows a trading software interface with two main windows: 'Market Watch' and 'Trade'.

Market Watch Window:

Symbol	Bid
AUD/USD	0.8095
AUD/NZD	1.2572
AUD/JPY	78.26
EUR/USD	1.4148
EUR/GBP	0.8557
EUR/CHF	1.5242
EUR/JPY	136.75
EUR/AUD	1.7467
EUR/CAD	1.6214
GBP/USD	1.6531
GBP/CHF	1.7811
GBP/JPY	159.79
USD/CAD	1.1456
USD/CHF	1.0774
USD/JPY	96.66
NZD/USD	0.6436
CHF/JPY	89.71
SILVER	13.79
GOLD	939.93

Trade Window:

Orders	Sell	Price	Buy	Orders
	Sell Limit	0.8115	Buy Stop	
	Sell Limit	0.8114	Buy Stop	
	Sell Limit	0.8113	Buy Stop	
	Sell Limit	0.8112	Buy Stop	
	Sell Limit	0.8111	Buy Stop	
	Sell Limit	0.8110	Buy Stop	
	Sell Limit	0.8109	Buy Stop	
	Sell Limit	0.8108	Buy Stop	
	Sell Limit	0.8107	Buy Stop	
	Sell Limit	0.8106	Buy Stop	
	Sell Limit	0.8105	Buy Stop	
	Sell Limit	0.8104	Buy Stop	
	Sell Limit	0.8103	Buy Stop	
	Sell Limit	0.8102	Buy Stop	
	Sell Limit	0.8101	Buy Stop	
	Sell Limit	0.8100	Buy Stop	
	Sell Limit	0.8099	Buy Market	
	Sell Limit	0.8098	Buy Limit	
	Sell Limit	0.8097	Buy Limit	
	Sell Limit	0.8096	Buy Limit	
	Sell Market	0.8095	Buy Limit	
	Sell Stop	0.8094	Buy Limit	
	Sell Stop	0.8093	Buy Limit	
	Sell Stop	0.8092	Buy Limit	

Trade Window (Bottom):

Ticket	Date/Time	Type	Amount	Symbol	Open ...	Curre...	S/L	T/P	Co...	In...	P/L
4566	2009-07-01 ...	Buy	0.1	AUD/USD	0.8096	0.8095			0.00	0...	-1.00

The interface also shows a 'Balance: 49,980.19' and 'Fit P/L: -1.00' in the Trade window. The bottom status bar indicates the time as -4GMT 01/07/2009 10:32:32 and the connection status as 'Connected'.

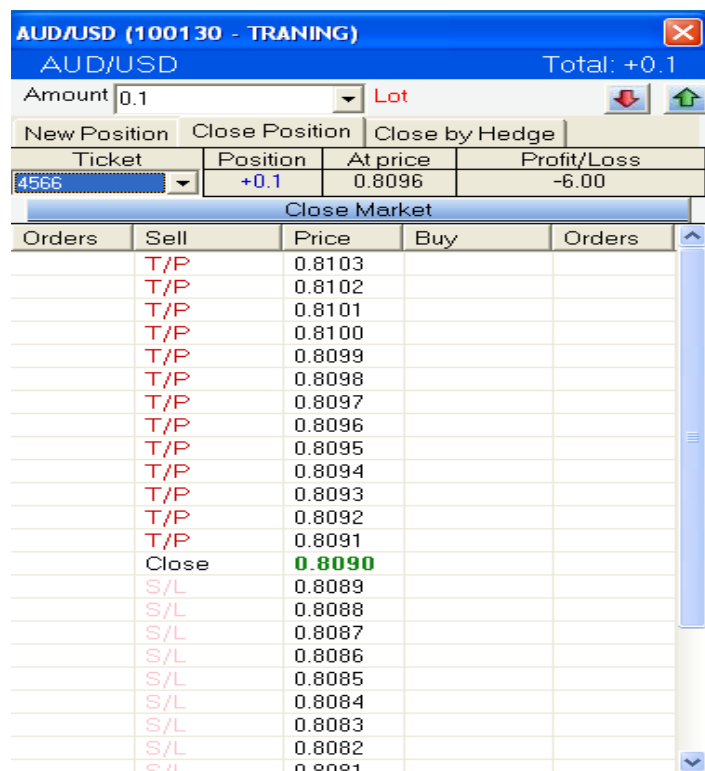
As shown from the illustration above we see the trade was executed in the (TRADE) Box

(CLOSING A NEW ORDER)

This is where you close an existing order, just go to the (TRADE) Box and choose the transaction you would like to close and right click it with your mouse and press Close /New Order



A closing screen will appear, when you see the price you like just press (CLOSE MARKET) and the transactions would be executed



T/P (TAKE PROFIT) S/L (STOP LOSS)

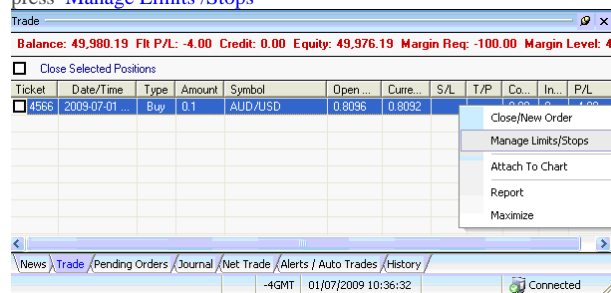
S/L (STOP LOSS)

This is a very important and useful order to use where you can **automatically stop your loss**, when used on proper levels in the market it can be very helpful in limiting your losses to a minimum

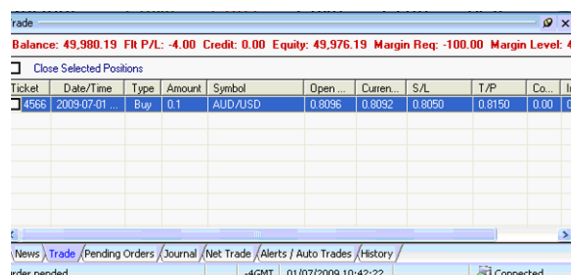
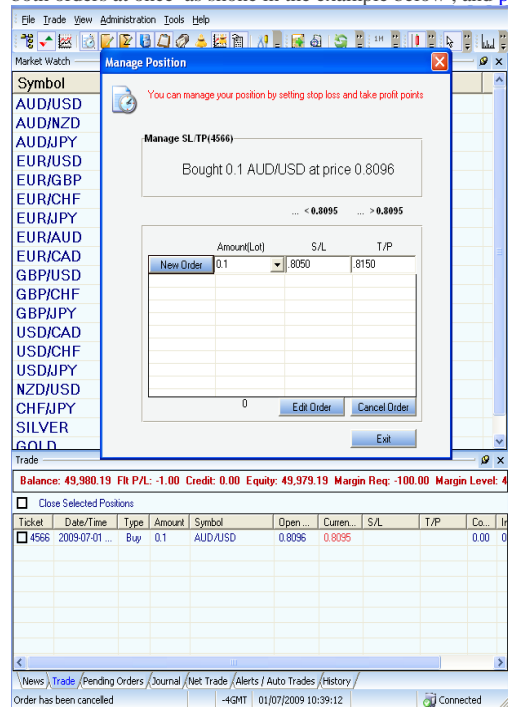
T/P (TAKE PROFIT)

This order can be very useful for traders, where the system **automatically takes profit on your position** based on the level you choose

How to place them , just go to the (TRADE) Box **right click the mouse** on the currency you would like to place an order on, and press **Manage Limits /Stops**



A **Manage Position Order** screen appears, just **fill in** the Stop Loss (S/L) level you want Or the Take Profit (T/P) order or place both orders at once as shone in the example below , and **press new order**. The orders will automatically appear at **The Trade Box**



(BUY LIMIT, BUY STOP, SELL LIMIT, SELL STOP)

BUY LIMIT: Is where you place an order to buy lower than the market price

BUY STOP: Is where you place an order to buy higher than the market price

SELL LIMIT: Is where you place an order to sell higher than the market price

SELL STOP: Is where you place an order to sell lower than the market price

To place these kinds of orders just go to the (MARKET WATCH), Right Click the Mouse on the currency you would like to trade, and then Go to (Limit/Stop Order) as shown in the diagram below

Symbol	Bid	Ask	High	Low	Time
AUD/USD	0.8089	0.8091	0.8109	0.8020	11:09
AUD/NZD	1.2562	1.2577			11:09
AUD/JPY	78.13	78.15			11:09
EUR/USD	1.4141	1.4143			11:09
EUR/GBP	0.8564	0.8568			11:09
EUR/CHF	1.5236	1.5239			11:09
EUR/JPY	136.58	136.61			11:09
EUR/AUD	1.7476	1.7486			11:09
EUR/CAD	1.6235	1.6241			11:09
GBP/USD	1.6505	1.6508			11:09
GBP/CHF	1.7781	1.7784			11:09
GBP/JPY	159.38	159.46			11:09
USD/CAD	1.1477	1.1481			11:09
USD/CHF	1.0773	1.0776			11:09
USD/JPY	96.56	96.59	96.99	96.15	11:09
NZD/USD	0.6434	0.6440	0.6476	0.6384	11:09
CHF/JPY	89.64	89.66	89.81	88.55	11:09
SILVER	13.78	13.82	13.84	13.57	11:09
GOLD	938.78	939.28	941.76	926.85	11:09

A New limit Order screen appears; just specify the Symbol, Amount, Type of Order and the Price then press Submit and the order will automatically go to the (TRADE) Box

Symbol	Bid	Ask	High	Low	Time
AUD/USD	0.8085	0.8089	0.8109	0.8020	11:11
AUD/NZD	1.2562	1.2577	1.2598	1.2371	11:11
AUD/JPY	78.09	78.14	78.39	77.49	11:11
EUR/USD	1.4139	1.4141	1.4171	1.4000	11:11
EUR/GBP	0.8567	0.8570	0.8577	0.8516	11:11
EUR/CHF	1.5237	1.5240	1.5255	1.5228	11:11
EUR/JPY	136.54	136.58	136.89	135.02	11:11

New Limit Order	
Enter your limit/stop order information	
Symbol: EUR/USD	Amount: 0.1 Lot
Type: Buy Limit	At price: < 1.4141
S/L: Buy Limit, Sell Limit, Buy Stop, Sell Stop	T/P: > 0.0000
Submit Cancel	

3-HEDGE INSTRUCTIONS

A hedge is the where you **buy and sell** the same currency at the same time where you have two open position one a **buy** position, the second a **sell** position . Where the **usable margin** is divided on the two contracts

Example: let's say we have 5 contracts **hedge on EUR/JPY** As illustrated below

Trade						
Balance: 49,911.25 Flt P/L: -46.20 Credit: 0.00 Equity: 49,865.05 Margin Req: -500.00 Margin Level: 9,973.01% Eff Margin:						
<input type="checkbox"/> Close Selected Positions						
Ticket	Date/Time	Type	Amount	Symbol	Open Price	Current Price
<input type="checkbox"/> 4584	2009-07-06 06:30:49	Buy	0.1	EUR/JPY	132.41	132.35
<input type="checkbox"/> 4585	2009-07-06 06:30:52	Sell	0.1	EUR/JPY	132.37	132.39
<input type="checkbox"/> 4586	2009-07-06 06:36:16	Sell	0.4	EUR/JPY	132.35	132.39
<input type="checkbox"/> 4587	2009-07-06 06:36:25	Buy	0.4	EUR/JPY	132.40	132.35

If we want to close one contract from ticket 4584 with another contract from ticket 4586 , just right click on the currency in the **(TRADE) Box** and choose **close new order** , and then choose **Close by Hedge** and choose the contracts you want from the **ticket screen** , then press **Close by Hedge**

EUR/JPY (100131 - 1) Total: 0.0

amount 0.1 Lot

low Position	Close Position	Close by Hedge
Ticket	Position	At price
4584	+0.1	132.41
4586	-0.4	132.35

Profit/Loss: -6.30

Orders	Sell	Price	Buy	Orders
Sell Limit	132.44	Buy Stop		
Sell Limit	132.43	Buy Stop		
Sell Limit	132.42	Buy Stop		
Sell Limit	132.41	Buy Stop		
Sell Limit	132.40	Buy Stop		
Sell Limit	132.39	Buy Stop		
Sell Limit	132.38	Buy Stop		
Sell Limit	132.37	Buy Stop		
Sell Limit	132.36	Buy Stop		
Sell Limit	132.35	Buy Market		
Sell Limit	132.34	Buy Limit		
Sell Limit	132.33	Buy Limit		
Sell Limit	132.33	Buy Limit		
Sell Limit	132.32	Buy Limit		
Sell Market	132.31	Buy Limit		
Sell Stop	132.30	Buy Limit		
Sell Stop	132.29	Buy Limit		
Sell Stop	132.28	Buy Limit		
Sell Stop	132.27	Buy Limit		
Sell Stop	132.26	Buy Limit		
Sell Stop	132.25	Buy Limit		
Sell Stop	132.24	Buy Limit		

In This way We have closed a (1) position buy and a (1) position sell and we have 4 hedged positions remaining

Trade						
Balance: 49,904.95 Flt P/L: -35.67 Credit: 0.00 Equity: 49,869.28 Margin Req: -400.00 Margin Level: 12,467.32% Eff Margin:						
<input type="checkbox"/> Close Selected Positions						
Ticket	Date/Time	Type	Amount	Symbol	Open Price	Current Price
<input type="checkbox"/> 4585	2009-07-06 06:30:52	Sell	0.1	EUR/JPY	132.37	132.44
<input type="checkbox"/> 4587	2009-07-06 06:36:25	Buy	0.4	EUR/JPY	132.40	132.40
<input type="checkbox"/> 4586	2009-07-06 06:36:16	Sell	0.3	EUR/JPY	132.35	132.44

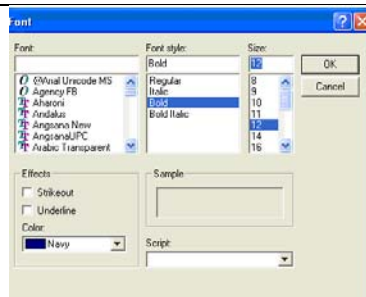
4-REDESIGN OF THE MARKET WATCH SCREEN

Step one: place your mouse on the market watch screen, **right click** your mouse and press **settings**, then choose **Market Watch Settings**



Step Two: change the **color**, **Font style** and **Size** as shown below

Color: navy
Font style: Bold
Size: 12



The Market Watch Look **will change** as shown below

Symbol	Bid	Ask	High	Low	Time
AUD/USD	0.8076	0.8090	0.8097	0.8020	08:54
AUD/NZD	1.2576	1.2591	1.2598	1.2371	08:54
AUD/JPY	78.08	78.18	78.28	77.49	08:55
EUR/USD	1.4108	1.4112	1.4122	1.4000	08:54
EUR/GBP	0.8567	0.8570	0.8575	0.8516	08:54
EUR/CHF	1.5246	1.5247	1.5255	1.5228	08:54
EUR/JPY	139.44	139.48	139.58	135.02	08:54
EUR/AUD	1.7459	1.7469	1.7502	1.7359	08:54
EUR/CAD	1.6197	1.6203	1.6327	1.6195	08:55
GBP/USD	1.6465	1.6468	1.6494	1.6382	08:54
GBP/CHF	1.7789	1.7797	1.7891	1.7767	08:54
GBP/JPY	159.20	159.29	159.66	158.14	08:54
USD/CAD	1.1481	1.1486	1.1658	1.1476	08:54
USD/CHF	1.0806	1.0808	1.0887	1.0789	08:55
USD/JPY	96.71	96.72	96.99	96.15	08:54
NZD/USD	0.6419	0.6433	0.6476	0.6384	08:54
CHF/JPY	89.49	89.68	89.67	88.55	08:54
SILVER	13.77	13.80	13.79	13.57	08:54
GOLD	937.90	938.29	938.78	939.55	08:55

